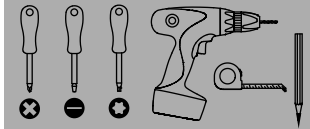
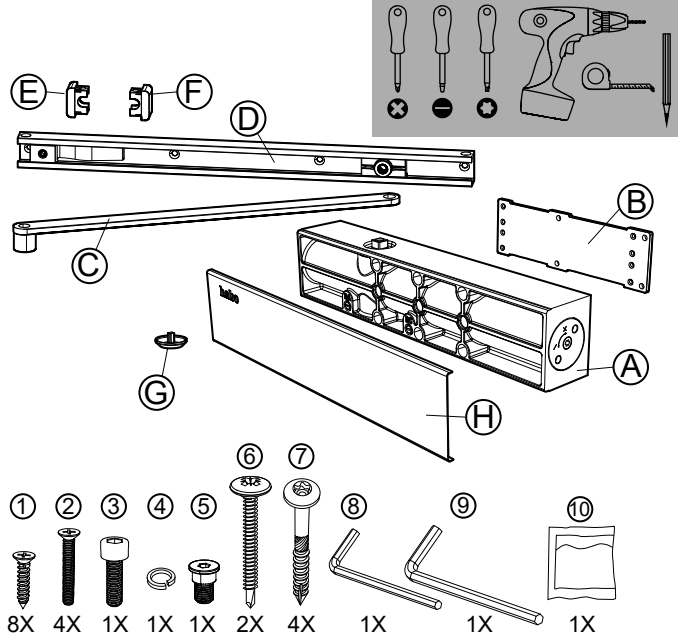
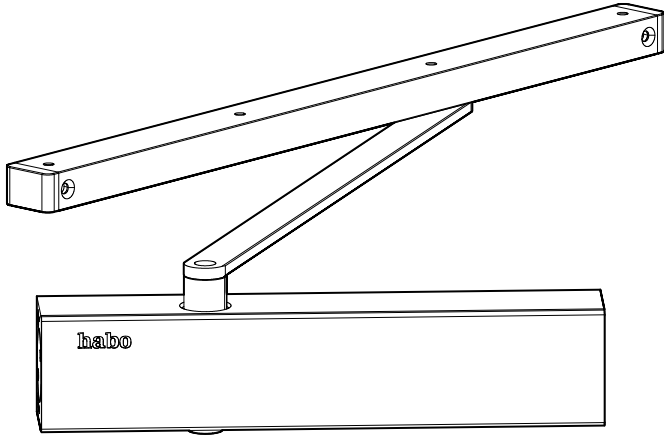
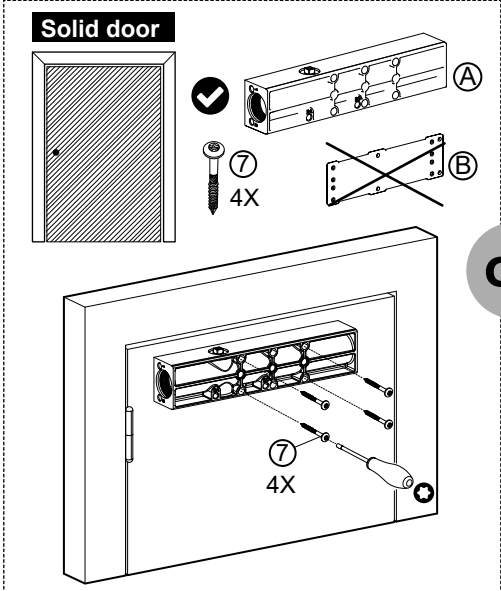


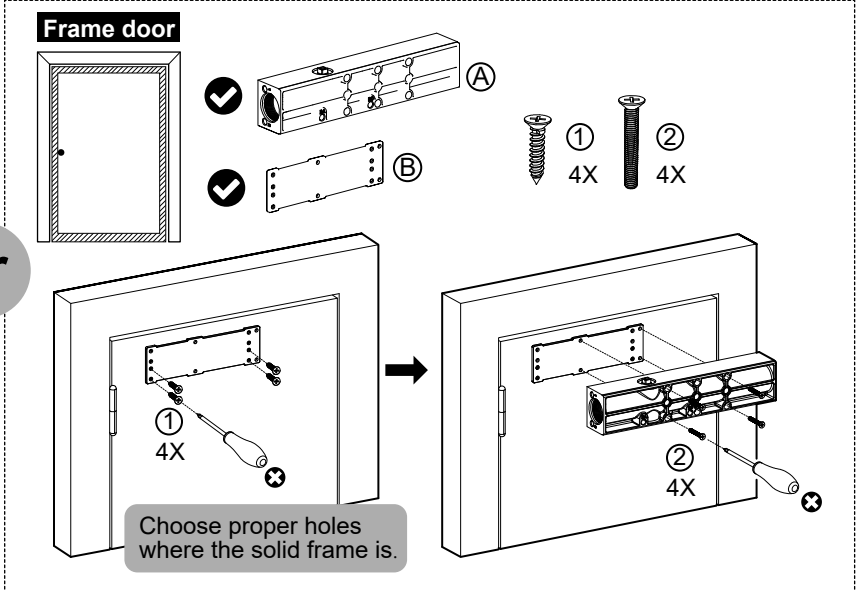
DOOR CLOSER 30604



!-1 Pick the parts and fittings you need depends on your door type.



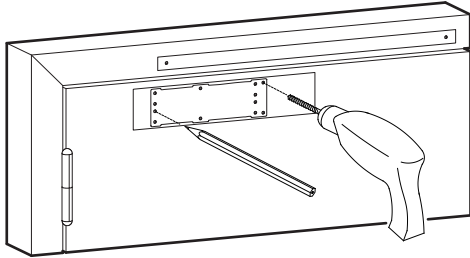
or



!-2 Pick the right Assembly Instruction Page according to the position on the door.

A Door pull direction Hinge on the left side	B Door pull direction Hinge on the right side	C Door push direction Hinge on the right side	D Door push direction Hinge on the left side
<p>P-2</p>	<p>P-3</p>	<p>P-4</p>	<p>P-5</p>

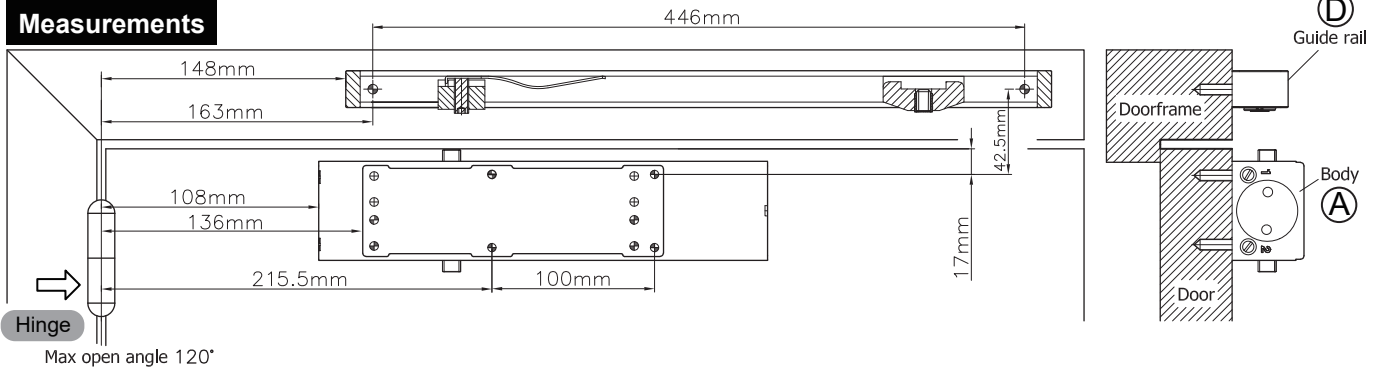
A-1



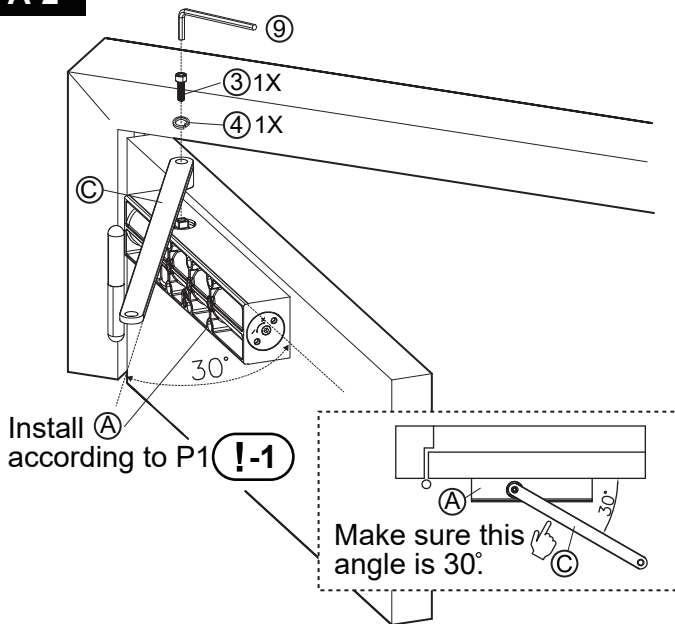
Choose the holes you need depends on your door type, mark holes and make pre-drilled holes according to the measurements as below.

⚠ The drawing below is not proportional, please just refer to the measures.

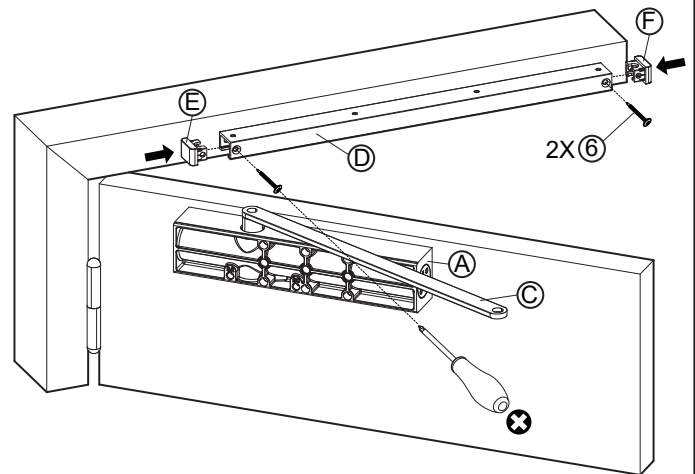
Measurements



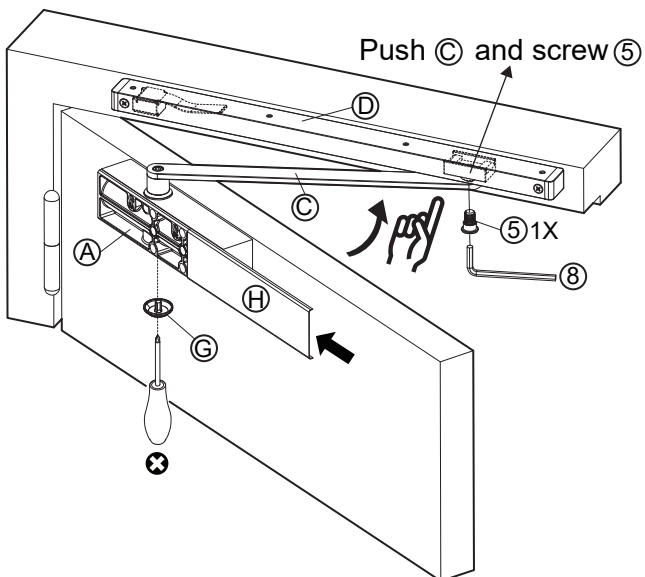
A-2



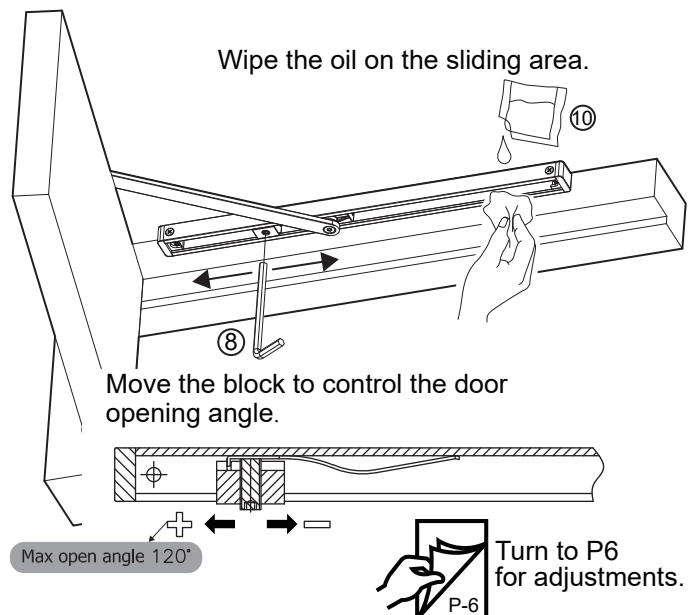
A-3

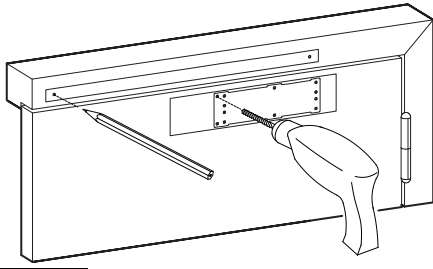


A-4



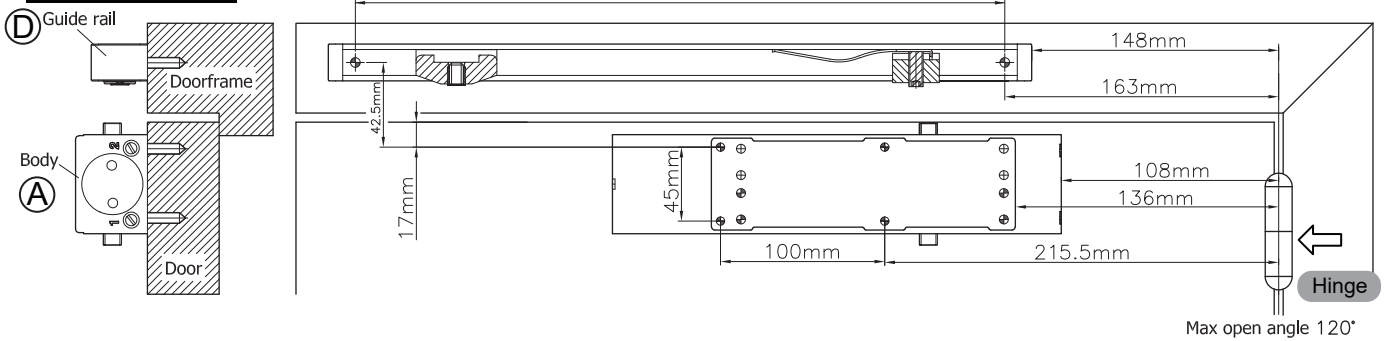
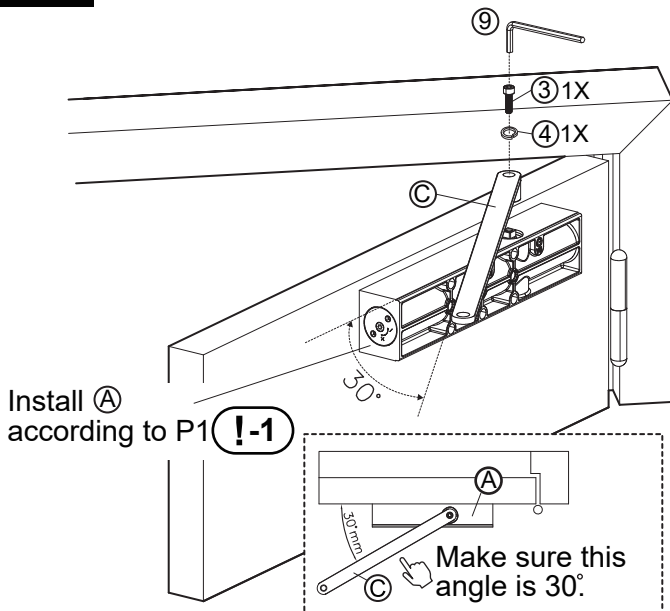
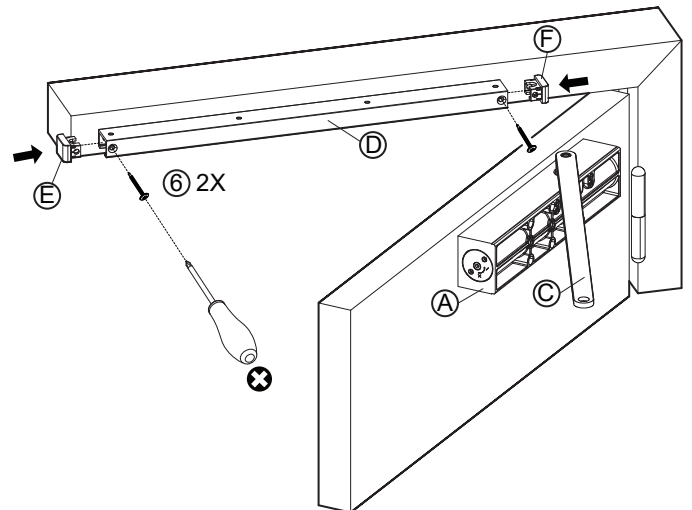
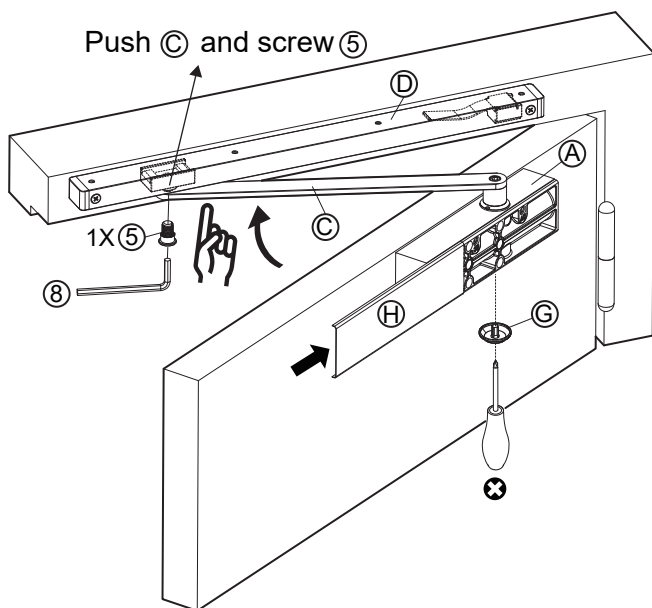
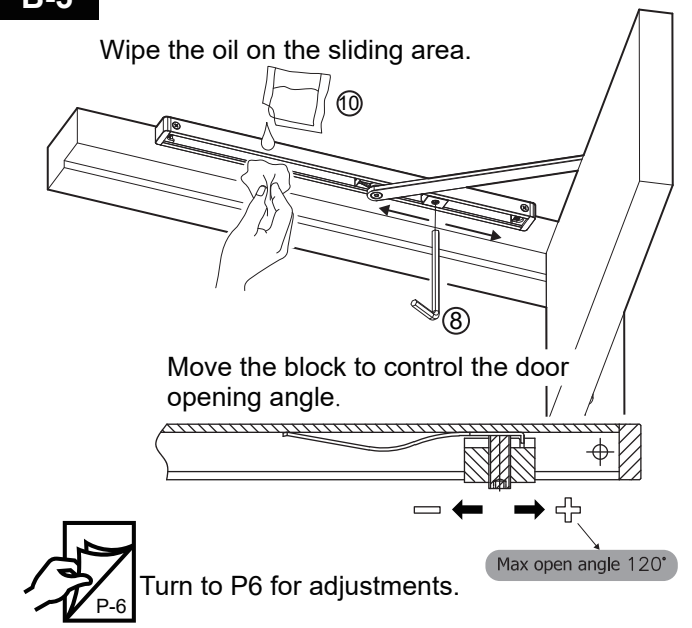
A-5



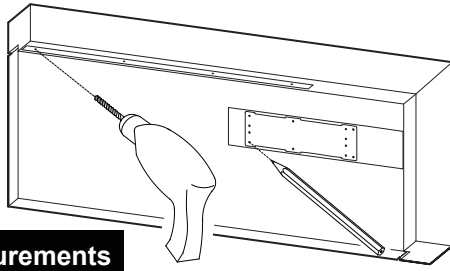
B-1

Choose the holes you need depends on your door type, mark holes and make pre-drilled holes according to the measurements as below.

⚠ The drawing below is not proportional, please just refer to the measures.

Measurements**B-2****B-3****B-4****B-5**

C-1

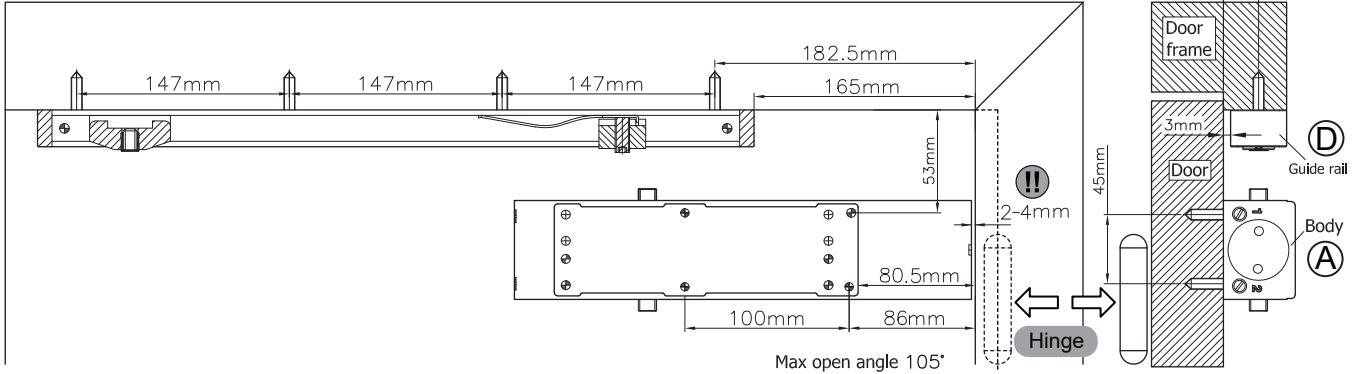


Choose the holes you need depends on your door type, mark holes and make pre-drilled holes according to the measurements as below.

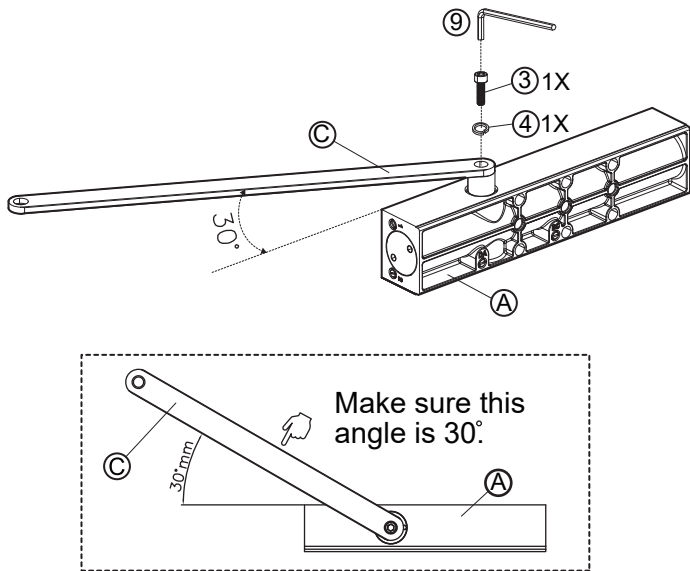
❗ The drawing below is not proportional, please just refer to the measures.

❗❗ Please make sure there is a 2-4mm gap between the door frame and door closer.

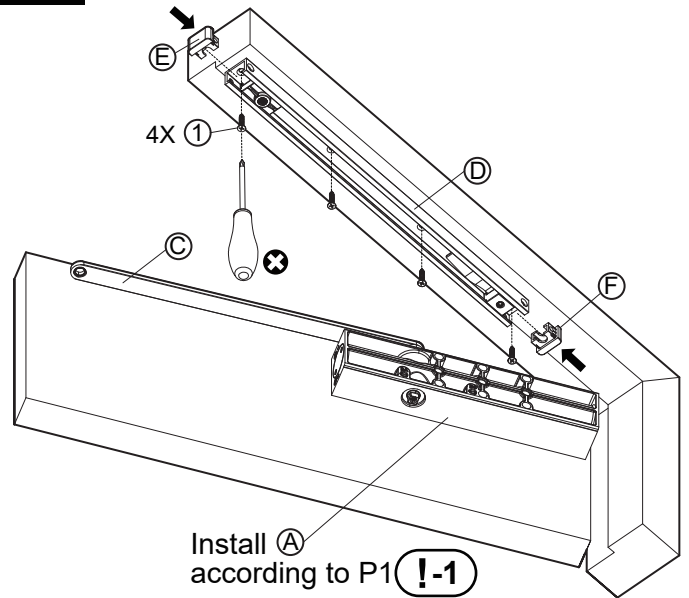
Measurements



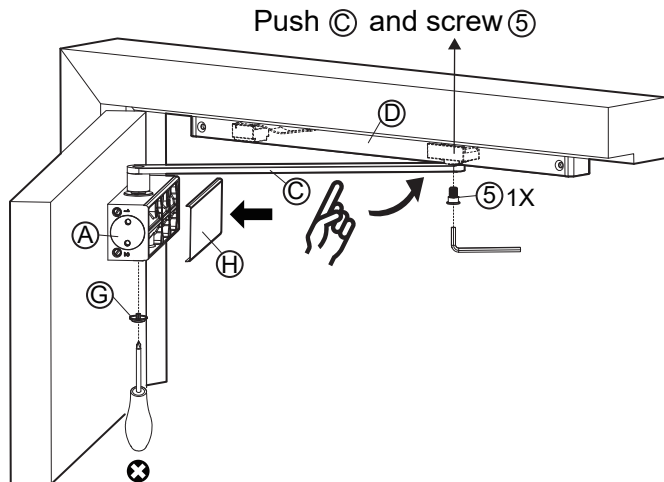
C-2



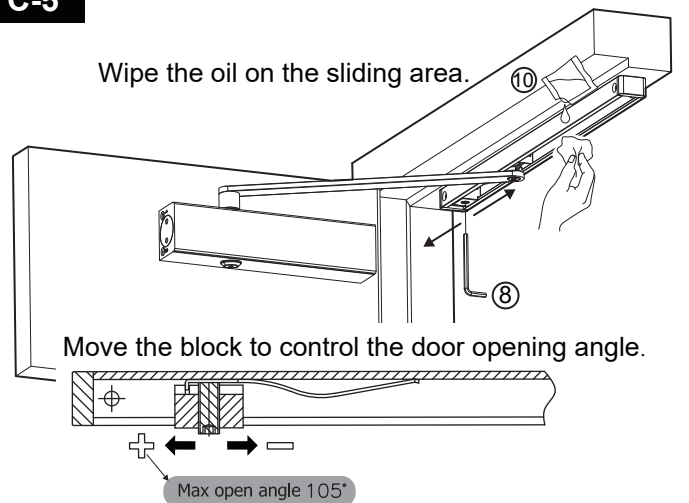
C-3



C-4



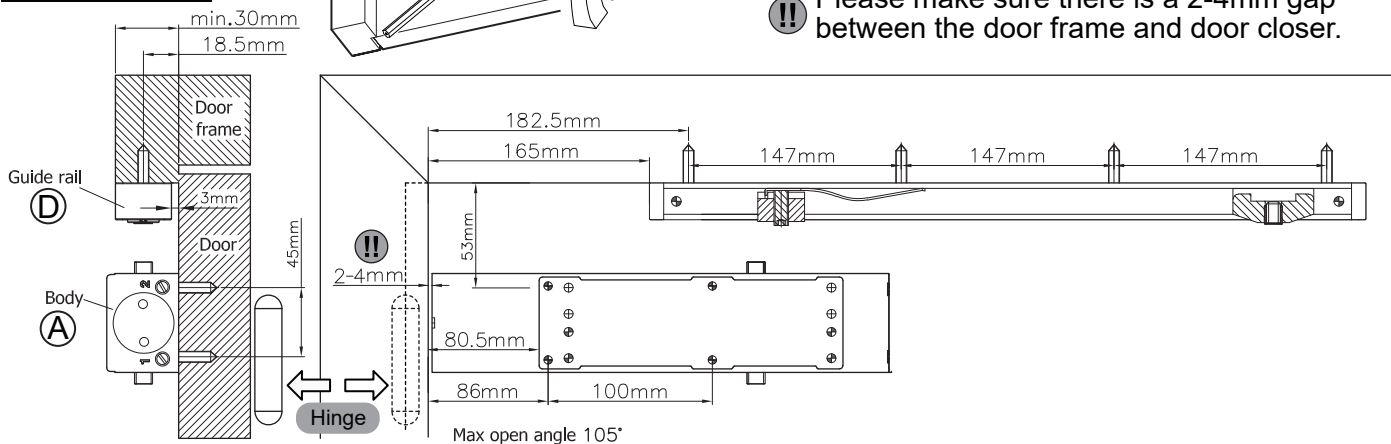
C-5



Turn to P6 for adjustments.

D-1

Measurements

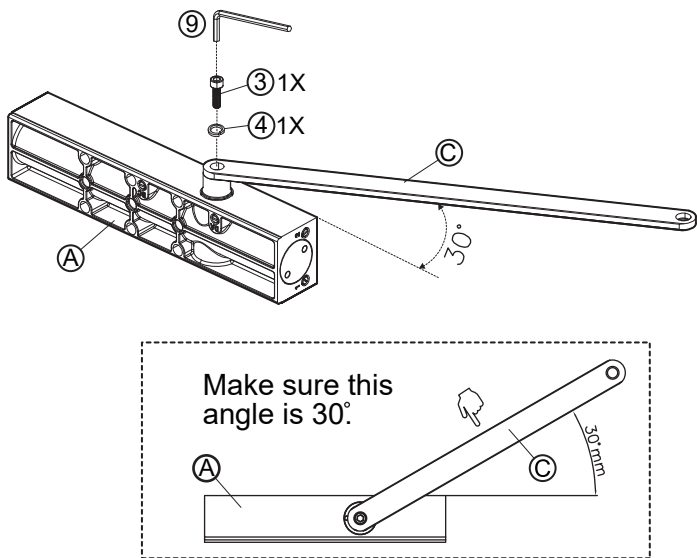


Choose the holes you need depends on your door type, mark holes and make pre-drilled holes according to the measurements as below.

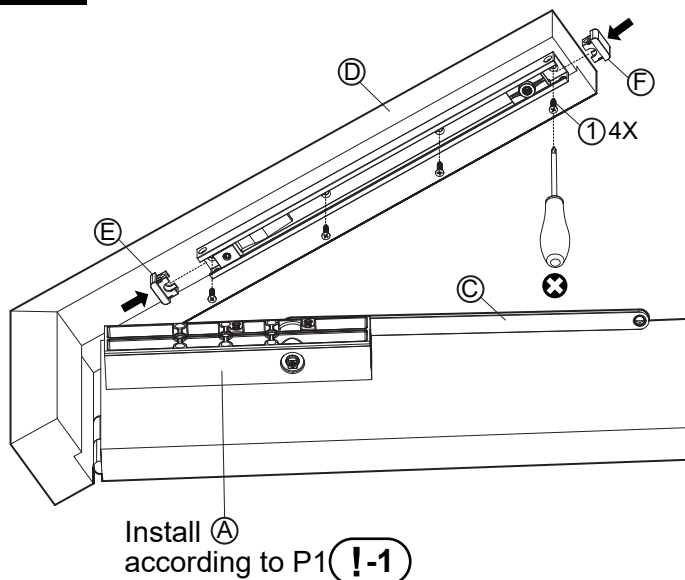
❗ The drawing below is not proportional, please just refer to the measures.

❗ Please make sure there is a 2-4mm gap between the door frame and door closer.

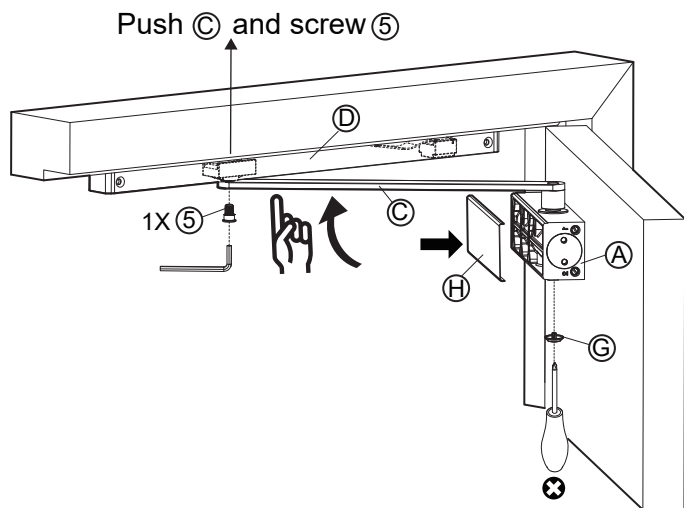
D-2



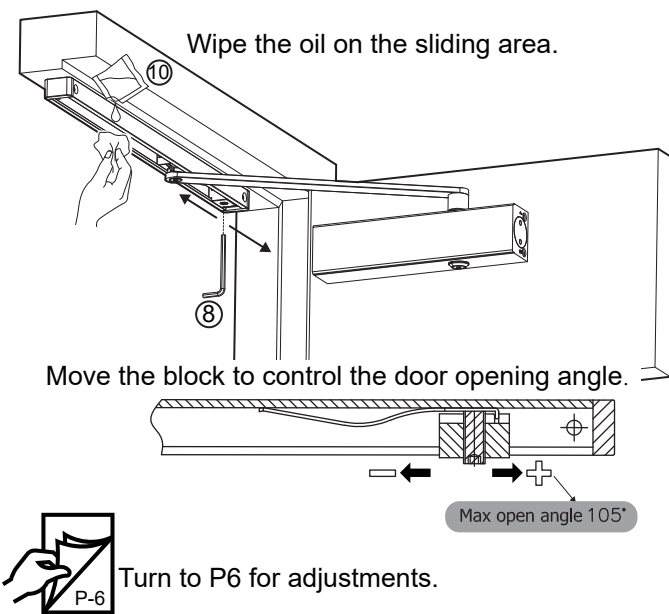
D-3



C-4

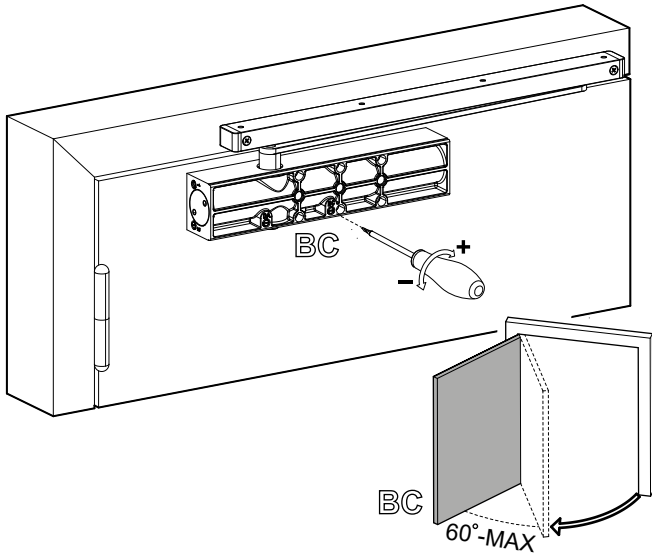


C-5

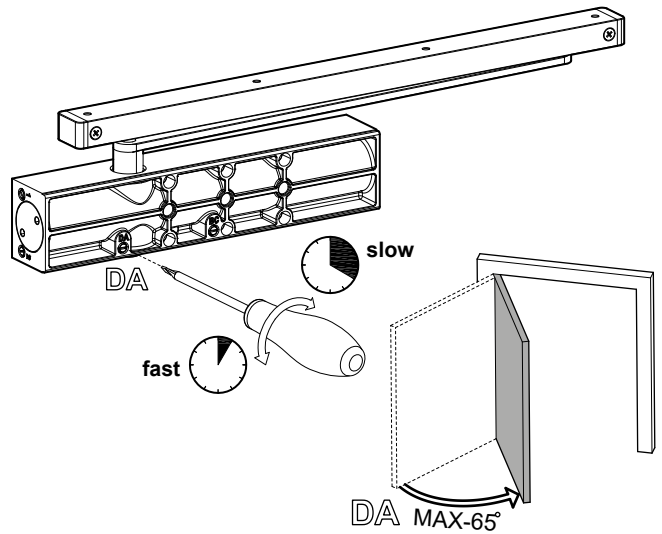


!-3 Adjust the door opening and closing speed by below steps.

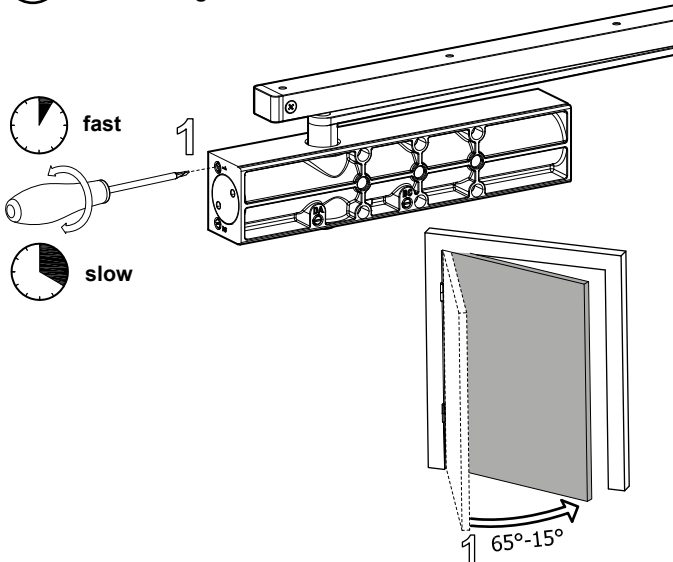
BC (Back Check) Function to adjust buffering power from 60-max (105/120) degree when opening the door.



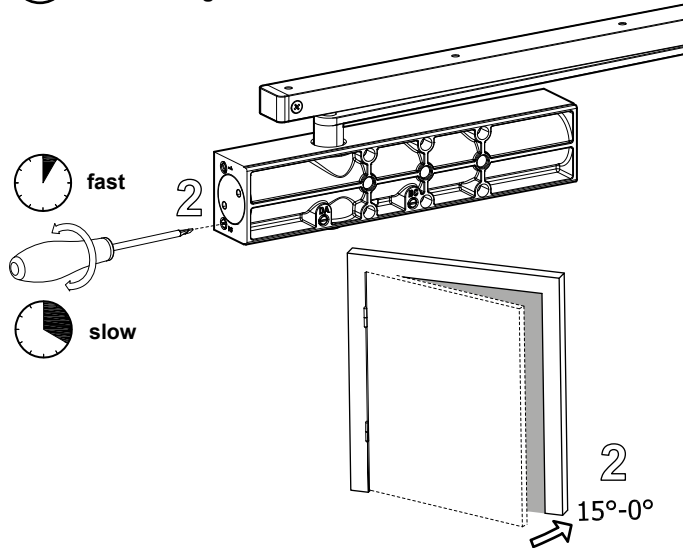
DA (Delay Action) Function to adjust speed from max (105/120) -65 degree when closing the door.



1 Function to adjust speed from 65-15 degree when closing the door.



2 Function to adjust speed from 15-0 degree when closing the door.



⊗ Function to adjust closing power.

Adjust closing power

#	(0) circles	
1#	+7 circles	1#: ≤800mm, 15-30Kg
2#	+13 circles	2#: 800-900mm, 25-45Kg
3#	+18.5 circles	3#: 830-950mm, 40-65Kg

Cautions!!!

1. Before the door closer is installed, it is strictly forbidden to turn the square head more than 180 degrees, otherwise the door closer will be damaged.
2. When the door closer arm is installed on the square head, it is strictly forbidden to knock it hard, otherwise the door closer will be damaged.
3. The door closer has an automatic door closing function. It is strictly forbidden to force the door to close by an external force, otherwise the door closer will be damaged.
4. After one month of initial installation and use, check whether the screws in each part are loose.
5. Due to the influence of the temperature difference between summer and winter every year, please pay attention to adjusting the closing speed.
6. When adjusting the speed, it is strictly forbidden to rotate the speed control valve higher than the surface of the body, otherwise, it will cause oil leakage.